



# Lab Safety Quiz

## INTRO:

A lab, or laboratory, is any setting that is designed for scientific experiments, research, or teaching. These areas contain various chemicals and equipment that can be extremely dangerous if they are not handled properly. Therefore, it is important for all persons operating the lab to know general safety procedures before engaging in any scientific work. In science classrooms, it is your science teacher's professional duty to ensure that all students are aware of and following the safety procedures at all times.



In this lab safety activity, Mr. Mickens and his four students Matt, Abeni, Lisa, and Gerardo learn important safety procedures on their first day of class. Included is the "[Lab Safety DOs and DON'Ts](#)" video, blank Lab Safety Quiz, and Teacher Answer Key. Lab Safety Scenario Cards are also available.

## LAB SAFETY QUIZ:

- Following instructions is a good way to be safe.
  - True
  - False
- If instructions are unclear, you should...
  - Try to guess what the instructions mean
  - Ignore that step, and move forward
  - Stop immediately, and ask the teacher
  - Pull out your phone to Google the step
- Around open flames, it is important to...
  - Wear your hair loose and near the flame
  - Avoid loose clothing and tie up your hair
  - Record a selfie near the flame
  - Wear large, dangling jewelry near the flame
- It is NOT important to know where all of the safety equipment (ex. fire extinguisher) is in the lab.
  - True
  - False
- What things should NOT be in the lab area?
  - Book bags/purses
  - Food/drink
  - Textbooks/phones
  - All of the above
- Wearing \_\_\_\_\_ would make you more prone to injury, and are not permitted in labs.
  - Close-toed sneakers
  - Open-toed sandals/high heels
  - Lab aprons/coats
  - Gloves and goggles
- If glassware is broken, you should...
  - Pick it up with your bare hands
  - Sweep and throw it away in the regular trash
  - Use broom and place in proper container
  - Make another classmate pick it up
- Heated glassware should be picked up using...
  - Your bare hands and a paper towel
  - Your bare hands only
  - A pair of tongs
  - None of the above
- When handling chemicals, it is important to...
  - Pull out your phone to check your DMs
  - Scratch your nose when it itches
  - Rub your eyes because you have allergies
  - Wash your hands before touching anything
- An eyewash station is used when chemicals get in your eye.
  - True
  - False
- Why should you not eat or drink during a lab?
  - You could cross-contaminate materials
  - You could ingest something harmful
  - You could leave the area or materials dirty
  - All of the above
- Wafting is an improper way to smell chemicals in a lab.
  - True
  - False

# Lab Safety Quiz

For #13-18, describe the improper lab safety procedures present in each scenario.

13.



---

---

---

16.

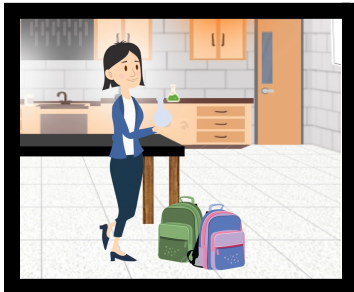


---

---

---

14.



---

---

---

17.

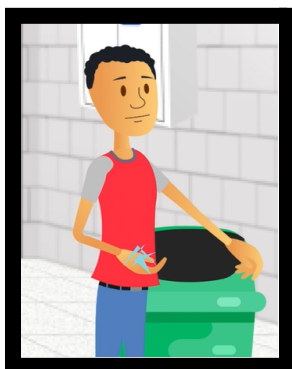


---

---

---

15.



---

---

---

18.



---

---

---



# Lab Safety Quiz

## TEACHER ANSWER KEY:

1. A
2. C
3. B
4. B
5. D
6. B
7. C
8. C
9. D
10. A
11. D
12. B
13. Cell phone and loose hair near open flame, no goggles/gloves
14. High heels and book bags near lab station, no goggles/gloves
15. Bare hands picking up glass, glass being throw in regular trash, no goggles/gloves
16. Bare hands touching hot glass, not using tongs, no goggles/gloves
17. No goggles, horseplaying in lab
18. No wafting, food near lab station, no goggles/gloves